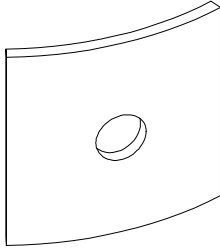
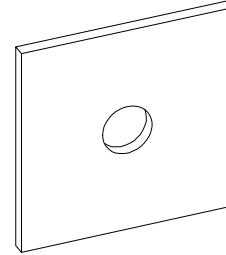


Washers

Square Curved Washers



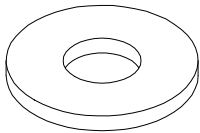
Square Flat Washers



Catalog Number		Dimensions	Hole Size	Approx. Wt. Lbs. Each
Curved Washers	Flat Washers			
SCW5-304	SFW5-304	3" x 3" x 1/4"	11/16"	0.65
SCW6-304	SFW6-304	3" x 3" x 1/4"	13/16"	0.63
SCW7-304	SFW7-304	3" x 3" x 1/4"	15/16"	0.61
SCW6-404	SFW6-404	4" x 4" x 1/4"	13/16"	1.12
SCW7-404	SFW7-404	4" x 4" x 1/4"	15/16"	1.08
SCW8-404	SFW8-404	4" x 4" x 1/4"	1 1/8"	1.07
SCW7-406	SFW7-406	4" x 4" x 3/8"	15/16"	1.60
SCW8-406	SFW8-406	4" x 4" x 3/8"	1 1/8"	1.58

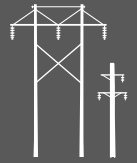
Other washer sizes and hole sizes are available.

Round Washers



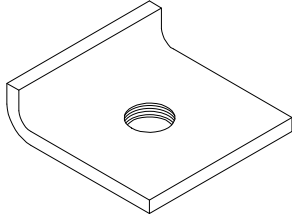
Catalog Number	Dimensions	Hole Size	Approx. Wt. Lbs. Each
RW3-10	1" x 1/8"	7/8"	0.02
RW4-13	1 3/8" x 1/8"	9/16"	0.04
RW4-30	3" x 3/16"	9/16"	0.48
RW5-16	1 3/4" x 1/8"	11/16"	0.07
RW6-20	2" x 1/8"	13/16"	0.12
RW7-22	2 1/4" x 1/8"	15/16"	0.15
RW7-30	3" x 1/8"	15/16"	0.20
RW8-30	3" x 1/8"	1 1/16"	0.15

Other round washer sizes are available.



Lock Washers

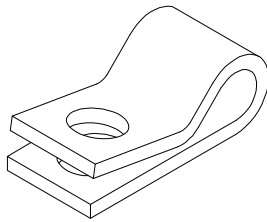
Tapped Lip Washers



Catalog Number	Dimensions	Bolt Diameter	Approx. Wt. Lbs. Each
64596-4	2" x 2 ³ / ₁₆ " x 3 ³ / ₁₆ "	1/2"	0.27
64596-5	2" x 2 ³ / ₁₆ " x 3 ³ / ₁₆ "	5/8"	0.27
64596-6	3" x 3" x 1/4"	3/4"	0.65
64596-7	3" x 3" x 1/4"	7/8"	0.82

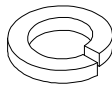
Other tapped lip washer sizes are also available.

Spring Washers



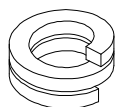
Catalog Number	Bolt Diameter	Approx. Wt. Lbs. Per C.
SW4	1/2"	24
SW5	5/8"	90
SW6	3/4"	90
SW7	7/8"	70
SW8	1"	89

Split Lock Washers



Catalog Number	Bolt Diameter	Approx. Wt. Lbs. Per C.
LW4	1/2"	2.0
LW5	5/8"	3.0
LW6	3/4"	5.0
LW7	7/8"	7.0
LW8	1"	12.0

Double Coil Spring Lock Washers



Catalog Number	Bolt Diameter	Approx. Wt. Lbs. Per C.
LW2-4	1/2"	3.0
LW2-5	5/8"	5.0
LW2-6	3/4"	8.0
LW2-7	7/8"	11.0
LW2-8	1"	15.0