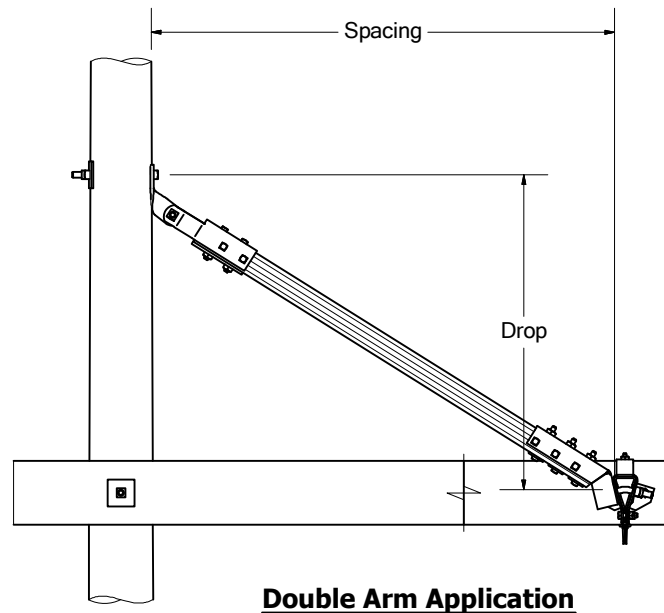
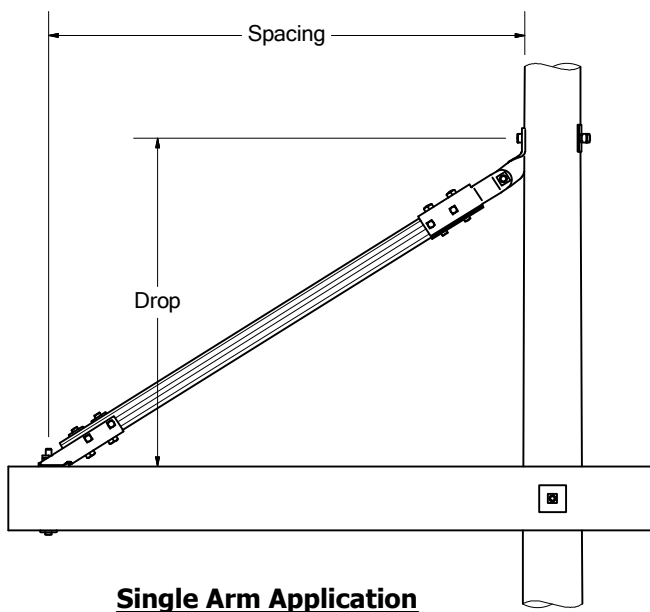
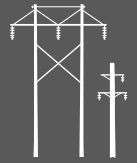


Combination Tension Vee Braces

BROOKS Combination Tension Vee Braces combine end fitting features of tension braces and knee or vee braces. Combination braces are used for applications where it is advantageous for one end of the brace to connect to a tee while the other end attaches to the side of a spacer fitting, or to other similar structure components.

Combination braces may be combined with compatible sized turnbuckles available from BROOKS, for critical length adjustment. Combination braces may be ordered by the catalog number developed from the codes on the next page, or by the brace series along with descriptive data. The catalog number indicates “each” units, meaning a single piece of wood assembled to end fittings.





Combination Tension Vee Brace Ordering Code

For 423 and 435 Series Braces

Ordering Information:

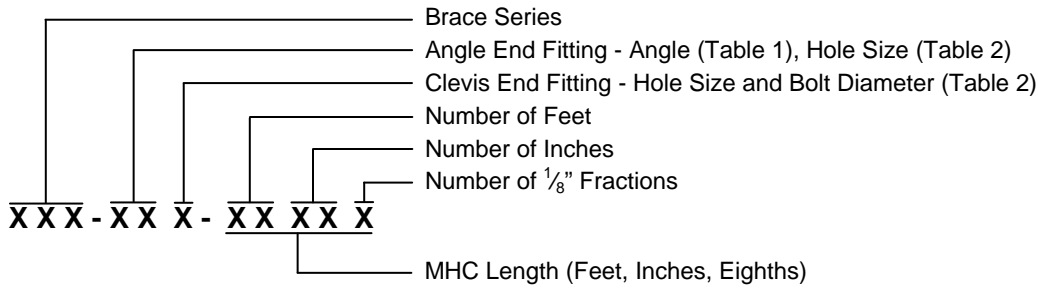


Table 1

End Fitting Angle

Bend Code	Degree
C	30
F	37 $\frac{1}{2}$ "
J	45
L	50"
M	52 $\frac{1}{2}$ "

Additional angles are available

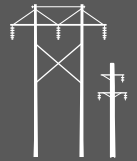
Table 2

Mounting Hole Size

Hole	Size	Bolt Diameter
7	1 $\frac{5}{16}$ "	7/8"
8	1 $\frac{1}{8}$ "	1"

Ordering Example: 423-F77-09043 = 1 Combination Tension Vee Brace, 3 $\frac{3}{8}$ " x 4 $\frac{3}{8}$ " wood, angle fitting 37 $\frac{1}{2}$ ° (degree) with 1 $\frac{5}{16}$ " hole, 7/8" bolt in clevis fitting, MHC = 9'-4 $\frac{3}{8}$ ". Approximate shipping weight = 62 lbs. per piece.

Ordering Example: 435-J87-1110 = 1 Combination Tension Vee Brace, 3 $\frac{1}{2}$ " x 4 $\frac{1}{2}$ " wood, angle fitting 45° (degree) with 1 $\frac{1}{8}$ " hole, 7/8" bolt in clevis fitting, MHC = 11'-10". Approximate shipping weight = 95 lbs. per piece.



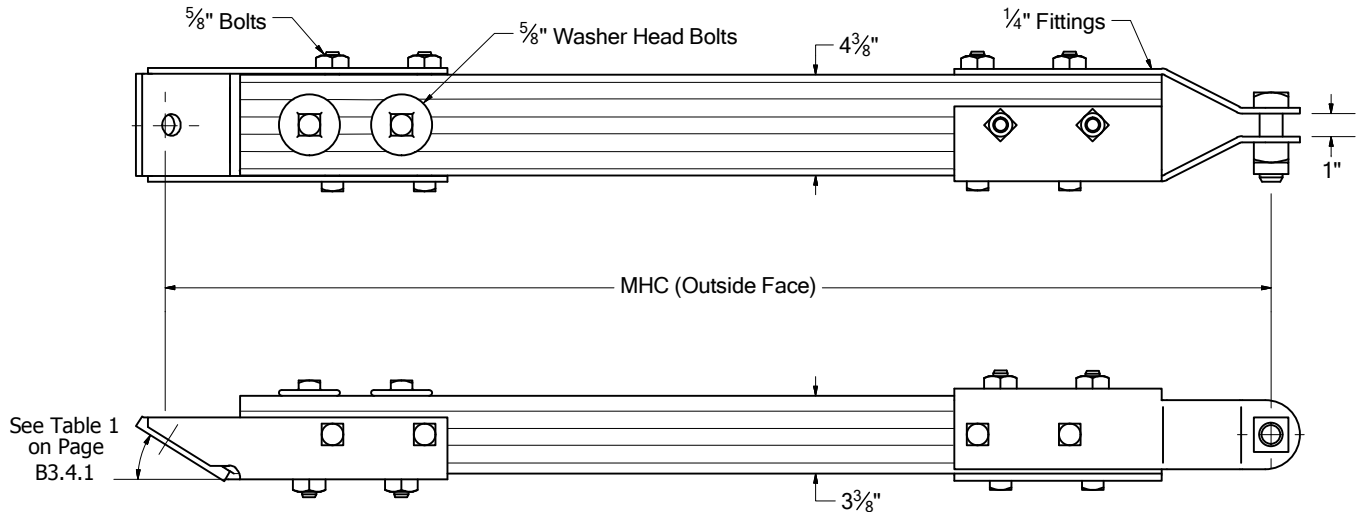
423 Series Combination Tension Vee Braces

25,000 Lbs. Ultimate Tensile Capacity

Wood Section - $3\frac{3}{8}$ " x $4\frac{3}{8}$ ". **Standard Holes - $\frac{15}{16}$ ".** **$\frac{13}{16}$ " holes are also available for this series.**

The 423 Series Combination Tension Vee Braces are furnished standard with 1 clevis pin bolt with nut and locknut factory assembled.

To estimate shipping weight per piece, multiply MHC in feet equivalent by 3.8, then add 26 pounds.



435 Series Combination Tension Vee Braces

35,000 Lbs. Ultimate Tensile Capacity

Wood Section - $3\frac{1}{2}$ " x $4\frac{1}{2}$ ". **Standard Holes - $\frac{15}{16}$ ".** **$1\frac{1}{8}$ " holes are also available for this series.**

The 435 Series Combination Tension Vee Braces are furnished standard with 1 clevis pin bolt with nut and locknut factory assembled.

To estimate shipping weight per piece, multiply MHC in feet equivalent by 4.1, then add 36 pounds.

