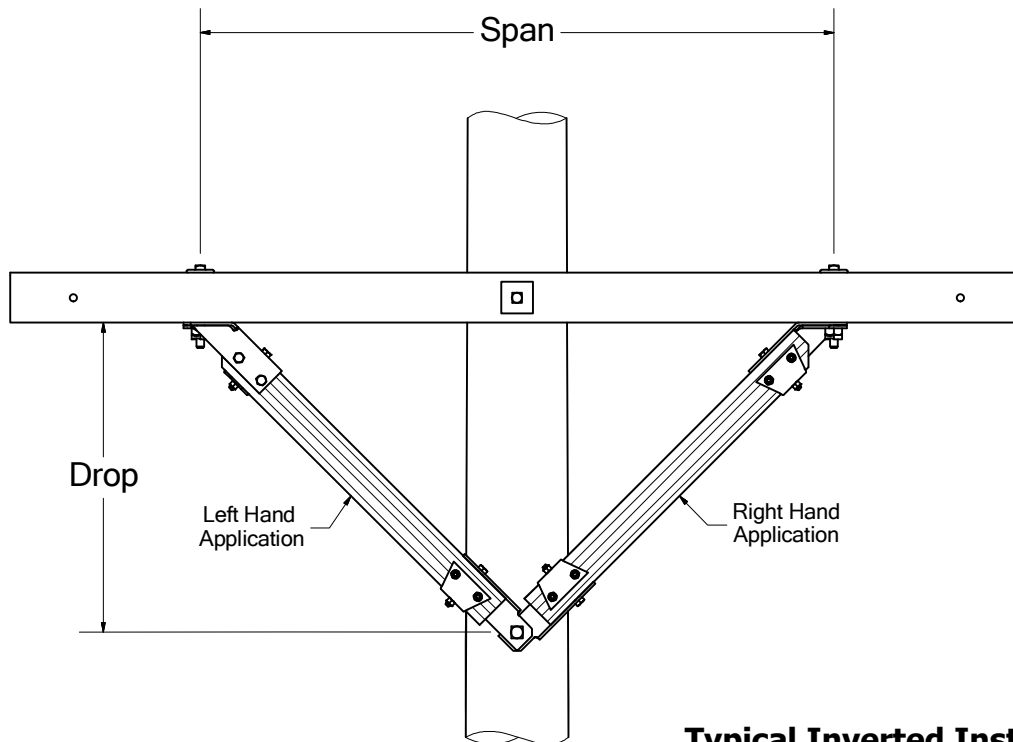


Face Mounted Braces

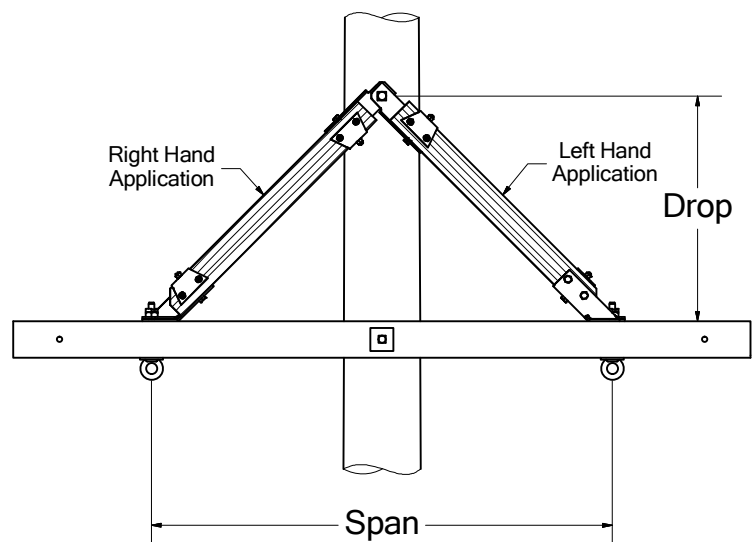
BROOKS Face Mounted Braces are typically furnished in pairs. Individual left or right hand units may be ordered as indicated by the examples on the next page.

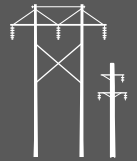
Face mounted braces are equally suited for installation under or above the crossarm for both single pole and H-frame applications. When positioned below the crossarm, the orientation of left or right hand assembly appears normal. In the inverted application, the orientation related to right and left hand is reversed.

Typical Underarm Installation



Typical Inverted Installation





Face Mounted Brace Ordering Codes

For 411 and 412 Series Braces

Ordering Information:

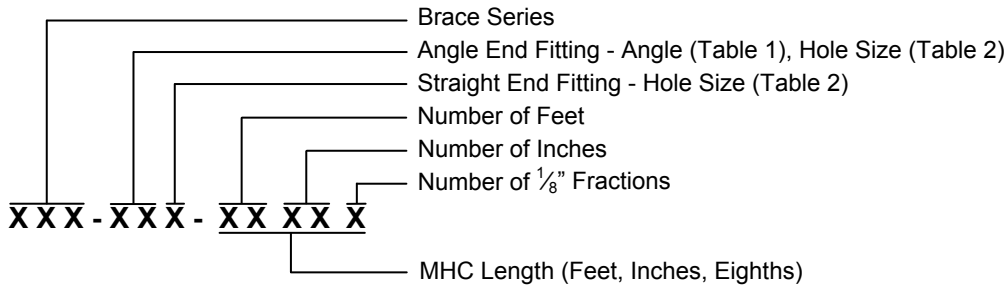


Table 1

End Fitting Angle

Bend Code	Degree
C	30°
F	37½°
J	45°
L	50°
M	52½°

Additional angles are available.

Table 2

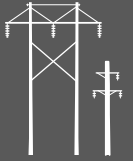
Mounting Hole Size

Hole Code	Size
5	1 ¹ / ₁₆ "
6	1 ³ / ₁₆ "
7	1 ⁵ / ₁₆ "

Ordering Example for Pairs: 412-F67-07043 = 1 pair Face Mounted Braces, 3³/₈" x 4³/₈" wood, angle fitting 37½° (degree) and 1³/₁₆" hole, straight fitting 1⁵/₁₆" hole, MHC = 7'- 4³/₈". Approximate shipping weight = 43 lbs. per piece, or 86 lbs. per pair.

For applications which require individual left or right hand pieces, use the same format illustrated above, except add the code letter "L" (left hand) or "R" (right hand) immediately following the brace series number.

Ordering Example for Pieces: 411L-F77-09 = Left hand Face Mounted Brace, 2³/₄" x 3¹/₂" wood, angle fitting 37½° (degree), 1⁵/₁₆" holes, MHC = 9'-0". Approximate shipping weight = 57 lbs. per piece.



411 Series Face Mounted Braces

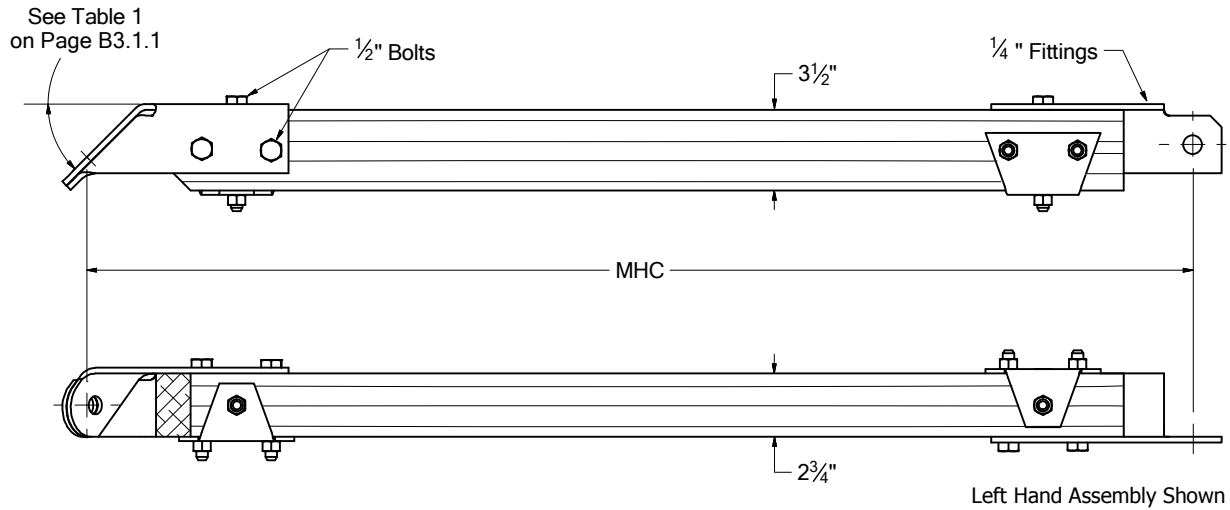
15,000 Lbs. Ultimate Tensile Capacity

Wood Section - $2\frac{3}{4}$ " x $3\frac{1}{2}$ ".

Standard Holes - $\frac{13}{16}$ ".

$\frac{11}{16}$ " holes are also available for this series.

To estimate shipping weight per piece, multiply MHC in feet equivalent by 2.4, then add 12 pounds.



412 Series Face Mounted Braces

20,000 Lbs. Ultimate Tensile Capacity

Wood Section - $3\frac{3}{8}$ " x $4\frac{3}{8}$ ".

Standard Holes - $\frac{15}{16}$ ".

$\frac{13}{16}$ " holes are also available for this series.

To estimate shipping weight per piece, multiply MHC in feet equivalent by 3.8, then add 15 pounds.

