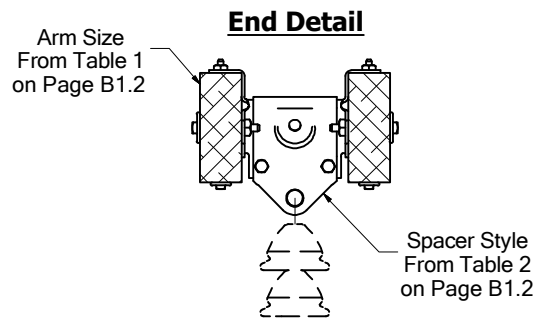
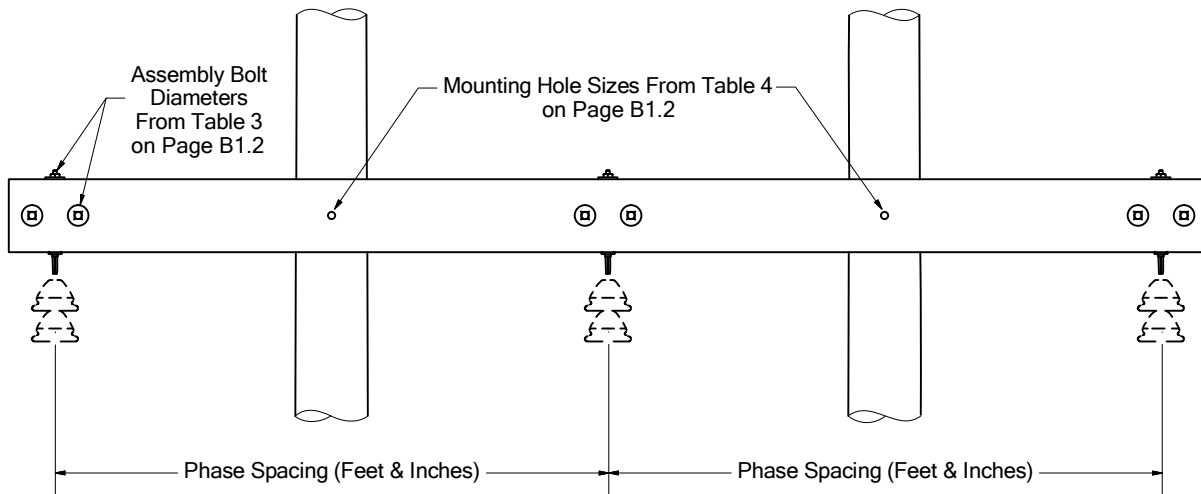
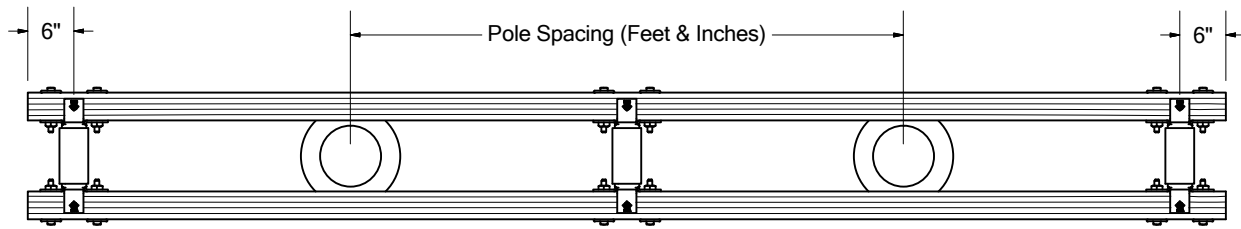
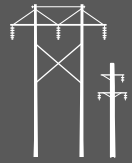


# Double Arm Tangent Crossarm Assemblies

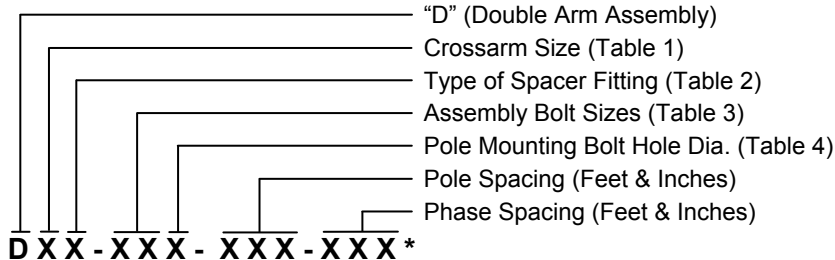
The drawings shown below are intended to assist in or dering a variety of tangent crossarm assemblies, utilizing many common crossarm sizes and hardware components, shown in tables on the next page. BROOKS is not limited by the sizes or styles noted. For additional information regarding designs, strengths, applications, etc., please contact the BROOKS Engineering Department.





## Ordering Codes for Double Arm Tangent Crossarm Assemblies

### Ordering Information:



**Table 1**

### Common Sizes for Solid Sawn and/or Laminated Crossarms

Solid Sawn Code	Size	Laminated Code	Size
A	2 <sup>5</sup> / <sub>8</sub> " x 9 <sup>1</sup> / <sub>2</sub> "	J	2 <sup>5</sup> / <sub>8</sub> " x 9 <sup>1</sup> / <sub>2</sub> "
B	3 <sup>5</sup> / <sub>8</sub> " x 7 <sup>1</sup> / <sub>2</sub> "	K	3 <sup>1</sup> / <sub>8</sub> " x 7 <sup>1</sup> / <sub>2</sub> "
C	3 <sup>5</sup> / <sub>8</sub> " x 8 <sup>1</sup> / <sub>2</sub> "	L	3 <sup>1</sup> / <sub>8</sub> " x 9"
D	3 <sup>5</sup> / <sub>8</sub> " x 9 <sup>1</sup> / <sub>2</sub> "	M	3 <sup>1</sup> / <sub>8</sub> " x 10 <sup>1</sup> / <sub>2</sub> "
E	3 <sup>5</sup> / <sub>8</sub> " x 11 <sup>1</sup> / <sub>2</sub> "	N	3 <sup>5</sup> / <sub>8</sub> " x 7 <sup>1</sup> / <sub>2</sub> "
F	5 <sup>1</sup> / <sub>2</sub> " x 7 <sup>1</sup> / <sub>2</sub> "	O	3 <sup>5</sup> / <sub>8</sub> " x 8 <sup>1</sup> / <sub>2</sub> "
G	5 <sup>5</sup> / <sub>8</sub> " x 7 <sup>1</sup> / <sub>2</sub> "	P	3 <sup>5</sup> / <sub>8</sub> " x 9 <sup>1</sup> / <sub>2</sub> "
		Q	3 <sup>5</sup> / <sub>8</sub> " x 11 <sup>1</sup> / <sub>2</sub> "
		R	5 <sup>1</sup> / <sub>8</sub> " x 7 <sup>1</sup> / <sub>2</sub> "
		S	5 <sup>1</sup> / <sub>8</sub> " x 9"
		T	5 <sup>1</sup> / <sub>8</sub> " x 10 <sup>1</sup> / <sub>2</sub> "
		U	5 <sup>1</sup> / <sub>2</sub> " x 7 <sup>1</sup> / <sub>2</sub> "
		V	5 <sup>5</sup> / <sub>8</sub> " x 7 <sup>1</sup> / <sub>2</sub> "
		W	6 <sup>3</sup> / <sub>4</sub> " x 7 <sup>1</sup> / <sub>2</sub> "

**Example:** DD1-457-156-156. Double Crossarm Assembly, 3<sup>5</sup>/<sub>8</sub>" x 9<sup>1</sup>/<sub>2</sub>" x 32'-0" solid sawn crossarms, 15'-6" C/C pole spacing, 15'-6" phase spacing. Assembled with (3) 5860 Series Spacer Fittings (8<sup>3</sup>/<sub>4</sub>" to 12<sup>3</sup>/<sub>4</sub>" adjustment) using 1<sup>1</sup>/<sub>2</sub>" vertical and 5<sup>5</sup>/<sub>8</sub>" horizontal mounting bolts. Drilled for 7<sup>7</sup>/<sub>8</sub>" arm mounting bolts.

\*To purchase a side arm, bored but less the assembly hardware, add a "W" to the assembly number ordering code.

**Table 2**

### Spacer Fittings

Code	Spacer Style	Adjustments
1	5860	8 <sup>3</sup> / <sub>4</sub> " to 12 <sup>3</sup> / <sub>4</sub> "
2	5861	10 <sup>3</sup> / <sub>4</sub> " to 14 <sup>3</sup> / <sub>4</sub> "
3	5862	12 <sup>3</sup> / <sub>4</sub> " to 16 <sup>3</sup> / <sub>4</sub> "
4	5870	8 <sup>3</sup> / <sub>4</sub> " to 12 <sup>3</sup> / <sub>4</sub> "
5	5871	10 <sup>3</sup> / <sub>4</sub> " to 14 <sup>3</sup> / <sub>4</sub> "
6	5872	12 <sup>3</sup> / <sub>4</sub> " to 16 <sup>3</sup> / <sub>4</sub> "
7	5840	8 <sup>3</sup> / <sub>4</sub> " to 12 <sup>3</sup> / <sub>4</sub> "
8	5841	10 <sup>3</sup> / <sub>4</sub> " to 14 <sup>3</sup> / <sub>4</sub> "
9	5842	12 <sup>3</sup> / <sub>4</sub> " to 16 <sup>3</sup> / <sub>4</sub> "

**Table 3**

### Spacer Fitting Mounting Bolts

Code	Vertical	Horizontal
45	1 <sup>1</sup> / <sub>2</sub> "	5 <sup>5</sup> / <sub>8</sub> "
46	1 <sup>1</sup> / <sub>2</sub> "	3 <sup>3</sup> / <sub>4</sub> "
55	5 <sup>5</sup> / <sub>8</sub> "	5 <sup>5</sup> / <sub>8</sub> "
56	5 <sup>5</sup> / <sub>8</sub> "	3 <sup>3</sup> / <sub>4</sub> "
66	3 <sup>3</sup> / <sub>4</sub> "	3 <sup>3</sup> / <sub>4</sub> "

**Table 4**

### Mounting Bolt Size

Code	Bolt	Hole
6	3 <sup>3</sup> / <sub>4</sub> "	13 <sup>13</sup> / <sub>16</sub> "
7	7 <sup>7</sup> / <sub>8</sub> "	15 <sup>15</sup> / <sub>16</sub> "
8	1"	1 <sup>1</sup> / <sub>16</sub> "

**Pole mounting hardware is not furnished standard as part of the assembly and should be ordered separately.**