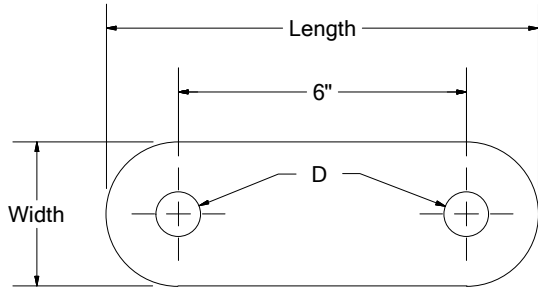


### Connecting Links

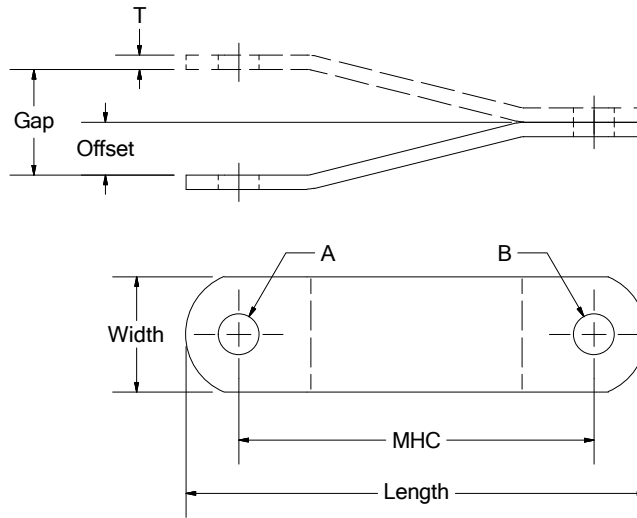
#### Straight Links



Catalog Number	Dimensions	Diameter "D"	Approx. Wt. Lbs. Each
22421	3/8" x 3" x 9"	15/16"	2.6
22421-A	3/8" x 3" x 9"	1 1/8"	2.6
22421-B	3/8" x 2" x 8 1/2"	15/16"	1.6
22421-C	1/4" x 2" x 8 1/2"	15/16"	1.1
22421-D	1/2" x 3" x 9"	1 1/8"	3.2

Links sold individually. Other links also available.

#### Bent Links



Catalog Number	Dimensions	MHC	Offset (1 Link)	Gap (2 Links)	A	B	Approx. Wt. Lbs. Each
3151	1/4" x 3" x 9 1/2"	7 1/4"	3/4"	1 1/2"	15/16"	1 1/4"	1.8
3152	1/4" x 2" x 9 1/2"	7 1/2"	3/4"	1 1/2"	15/16"	15/16"	1.2
3153	1/4" x 3" x 9 1/2"	7"	3/4"	1 1/2"	15/16"	15/16"	1.8
3154	3/8" x 2" x 9 1/2"	7 1/2"	1"	2"	15/16"	15/16"	1.8
3155	3/8" x 3" x 10"	7 1/4"	3/4"	1 1/2"	1 1/16"	1 1/16"	2.8
3157	3/8" x 3" x 12"	9 1/4"	1 3/8"	2 3/4"	1 1/16"	1 1/16"	3.5
3160	3/8" x 3" x 9 1/2"	7 1/8"	1"	2"	1 1/16"	1 1/4"	2.6
3176	3/8" x 3" x 9 1/2"	7 1/8"	1"	2"	15/16"	1 1/4"	2.8

Links sold individually. Other links also available.