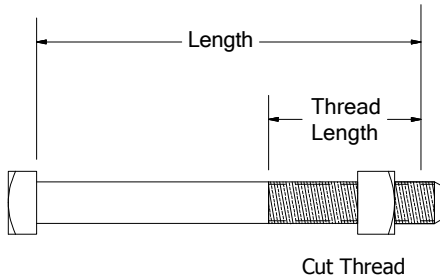


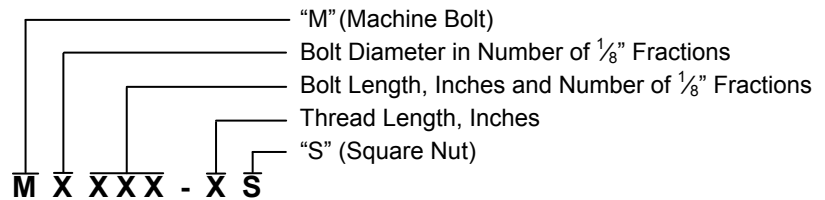
## Bolts

### Machine Bolts

All BROOKS bolts meet the requirements of ANSI C135.1. All square head machine bolts are furnished standard with (1) square nut. Other lengths are available on request.



Furnished standard with (1) square nut.

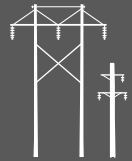


Example: M5104-4S = 5/8" x 10 1/2" Machine Bolt with (1) nut.

Catalog Number	Length	Thread Length	Approx. Wt. Lbs. Each
<b>3/4" Diameter—18,350 Lbs. Minimum Tensile Strength</b>			
M6080-4S	8"	4"	1.33
M6100-4S	10"	4"	1.35
M6120-6S	12"	6"	1.60
M6140-6S	14"	6"	1.88
M6160-6S	16"	6"	2.06
M6180-6S	18"	6"	2.14
M6200-6S	20"	6"	2.41
M6220-6S	22"	6"	2.73
M6240-6S	24"	6"	2.78

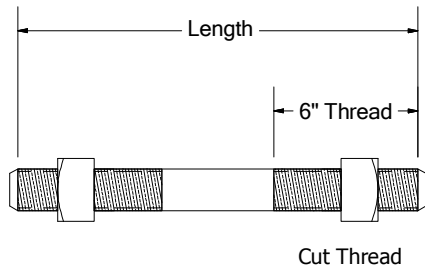
Catalog Number	Length	Thread Length	Approx. Wt. Lbs. Each
<b>1" Diameter—33,500 Lbs. Minimum Tensile Strength</b>			
M8140-6S	14"	6"	3.56
M8160-6S	16"	6"	4.03
M8180-6S	18"	6"	4.48
M8200-6S	20"	6"	4.92
M8220-6S	22"	6"	5.38
M8240-6S	24"	6"	5.83
M8260-6S	26"	6"	6.28
M8280-6S	28"	6"	6.73

Catalog Number	Length	Thread Length	Approx. Wt. Lbs. Each
<b>7/8" Diameter—25,400 Lbs. Minimum Tensile Strength</b>			
M7030-2S	3"	2"	1.21
M7080-4S	8"	4"	1.80
M7100-4S	10"	4"	2.12
M7120-6S	12"	6"	2.44
M7140-6S	14"	6"	2.77
M7160-6S	16"	6"	3.09
M7180-6S	18"	6"	3.41
M7200-6S	20"	6"	3.73
M7220-6S	22"	6"	4.05
M7240-6S	24"	6"	4.38
M7260-6S	26"	6"	4.70

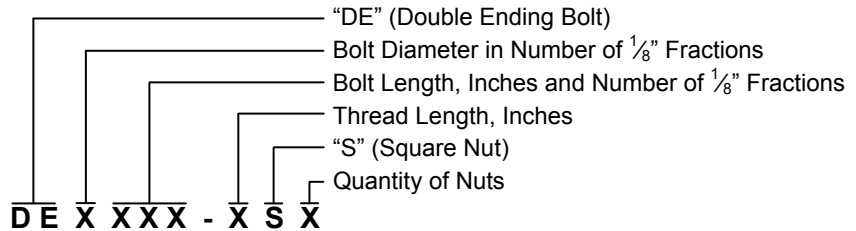


### Double End Bolts

BROOKS Double End Bolts are commonly used to attach double crossarm transmission assemblies at the pole locations. BROOKS Double End Bolts meet the requirements of ANSI C135.1, are threaded 6" on each end and furnished standard with (2) square nuts. Other lengths and thread lengths are available on request.



Furnished standard with (2) square nuts.

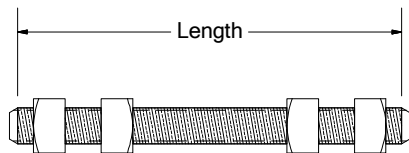


Example: DE6260-6S2 = 3/4" x 26" Double Ending Bolt with (2) nuts.

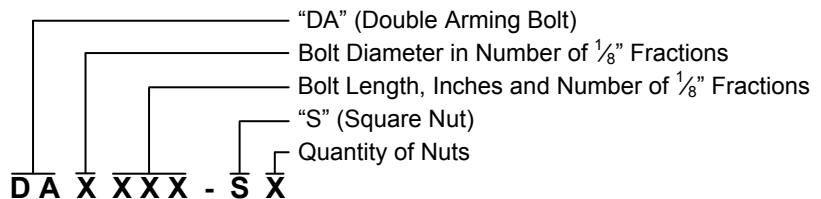
Catalog Number	Length	Approx. Wt. Lbs. Each
<b>7/8" Diameter—25,400 Lbs. Minimum Tensile Strength</b>		
DE7180-6S2	18"	3.38
DE7200-6S2	20"	3.63
DE7220-6S2	22"	3.99
DE7240-6S2	24"	4.25
DE7260-6S2	26"	4.66
DE7280-6S2	28"	4.96
DE7300-6S2	30"	5.26

Catalog Number	Length	Approx. Wt. Lbs. Each
<b>1" Diameter—33,500 Lbs. Minimum Tensile Strength</b>		
DE8200-6S2	20"	4.68
DE8220-6S2	22"	5.13
DE8240-6S2	24"	5.58
DE8260-6S2	26"	6.03
DE8280-6S2	28"	6.48
DE8300-6S2	30"	6.93
DE8320-6S2	32"	7.38

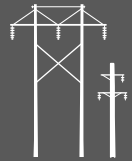
### Double Arming Bolts



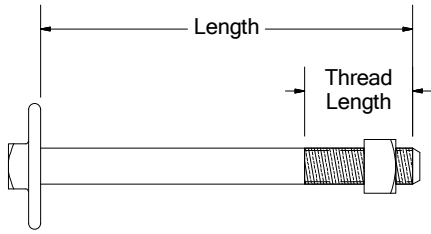
Furnished standard with (4) square nuts.



Example: DA6240-S4 = 3/4" x 24" Double Arming Bolt with (4) nuts.

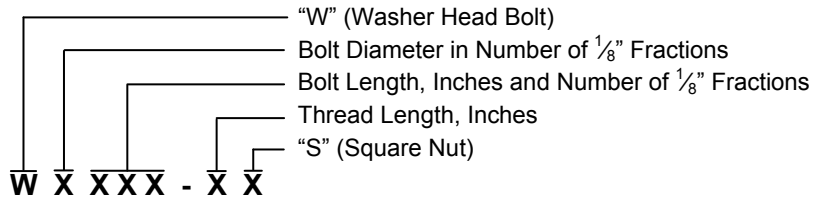


### Washer Head Bolts



Furnished standard with (1) square nut.

Bolt Size	Washer Diameter Minimum
3/8"	7/8"
1/2"	1 3/8"
5/8"	2"
3/4"	2 1/4"
7/8"	2 1/2"
1"	3"

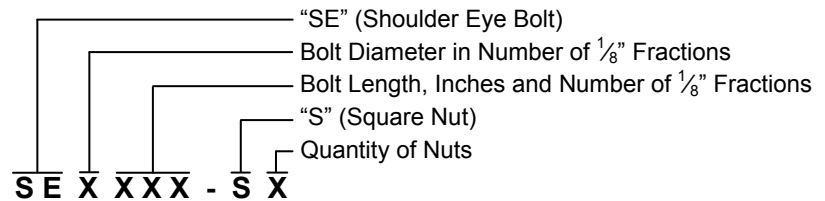
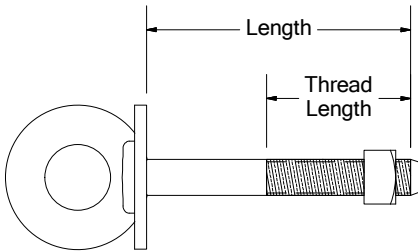


**Example:** W5104-4S = 5/8" x 10 1/2" Washer Head Bolt with (1) nut.

### Welded Shoulder Eye Bolts

BROOKS Shoulder Eye Bolts are typically used to support suspension insulators in single crossarm construction. The inside eye diameter is 1 3/8" which accepts either a C-hook or a clevis connection. Each bolt is furnished standard with (1) square nut.

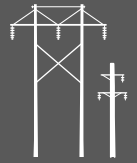
Furnished standard with (1) square nut.



**Example:** SE5100-4S = 5/8" x 10" Shoulder Eye Bolt with (1) nut.

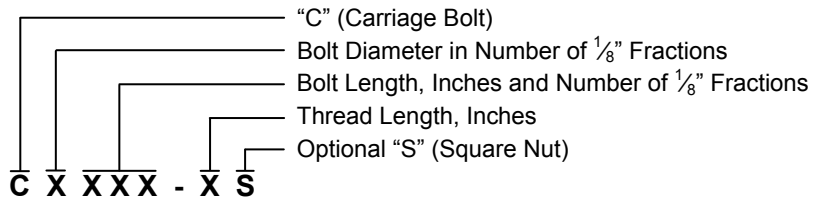
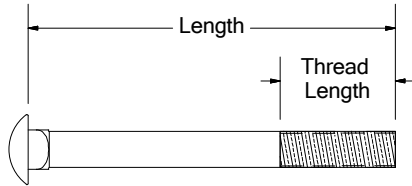
Catalog Number	Length	Thread Length	Approx. Wt. Lbs. Each
<b>5/8" Diameter—12,400 Lbs. Minimum Tensile Strength</b>			
SE5060-3S	6"	3"	1.64
SE5070-3S	7"	3"	1.73
SE5080-4S	8"	4"	1.82
SE5100-4S	10"	4"	1.99
SE5120-6S	12"	6"	2.16

Catalog Number	Length	Thread Length	Approx. Wt. Lbs. Each
<b>3/4" Diameter—18,350 Lbs. Minimum Tensile Strength</b>			
SE6060-3S	6"	3"	2.20
SE6070-3S	7"	3"	2.30
SE6080-4S	8"	4"	2.45
SE6100-4S	10"	4"	2.68
SE6120-6S	12"	6"	2.93



### Carriage Bolts

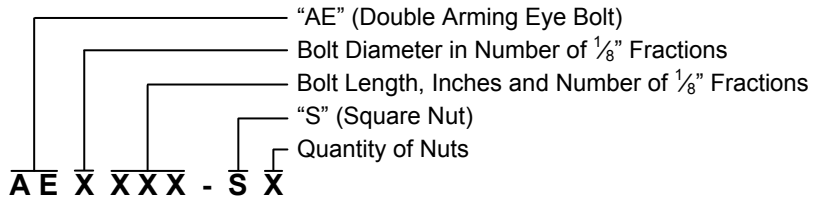
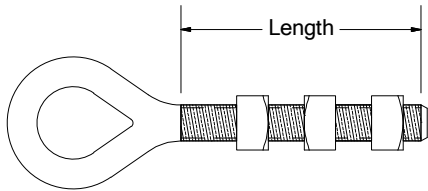
Square nuts ordered separately.



Example: C5074-3S =  $\frac{5}{8}$ " x  $7\frac{1}{2}$ " Carriage Bolt with (1) nut.

### Double Arming Eye Bolts

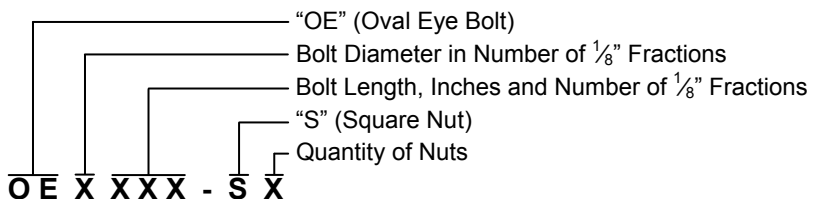
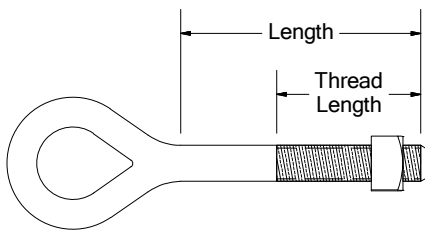
Furnished standard with (3) square nuts.



Example: AE6200-S3 =  $\frac{3}{4}$ " x 20" Double Arming Eye Bolt with (3) nuts.

### Oval Eye Bolts

Furnished standard with (1) square nut.



Example: OE5100-4S =  $\frac{5}{8}$ " x 10" Oval Eye Bolt with (1) nut.