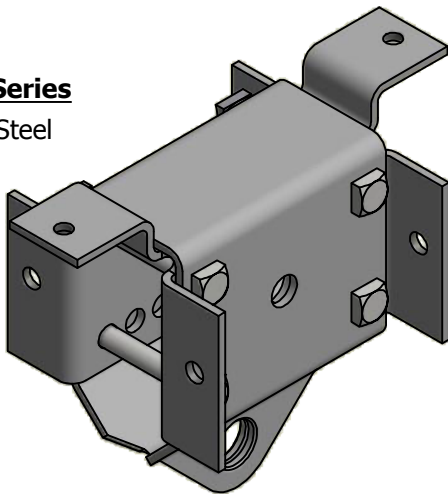


Adjustable Spacer Fittings

BROOKS Adjustable Spacer Fitting designs are available to meet any double arm and brace mounting application. BROOKS designs conform to accepted industry dimensions so bracing connections and mounting hole alignments will interchange with existing system standards. The adjustable features eliminates the need to gain poles and provides the ability to make easy field framing adjustments caused by varying pole diameters. Spacer fittings may be ordered by using the ordering codes on next page. BROOKS Spacer Fittings are tapped to assure the assembly remains tight and secure. The appropriate mounting bolt lengths are furnished standard with each spacer fitting when indicated in the ordering code.

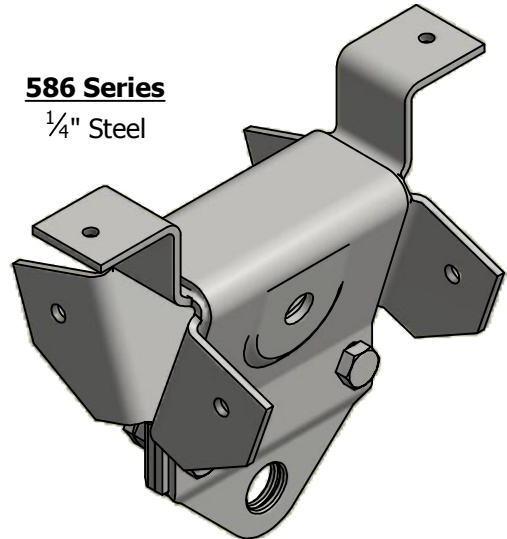
584 Series

$\frac{1}{4}$ " Steel



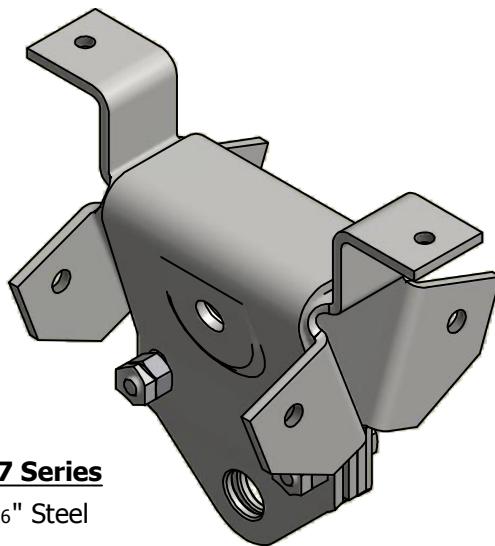
586 Series

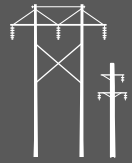
$\frac{1}{4}$ " Steel



587 Series

$\frac{5}{16}$ " Steel

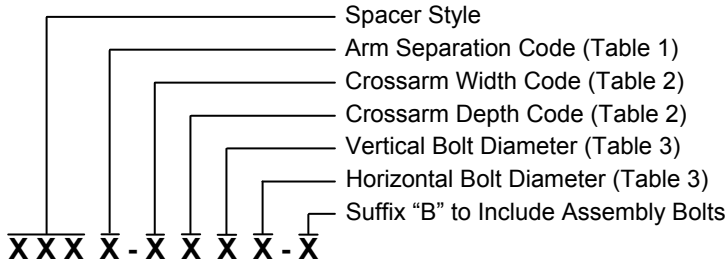




Adjustable Spacer Fitting Ordering Codes

For 584, 586 and 587 Series

Ordering Information:



Ordering Example: 5861-3345-B = 586 Series Adjustable Spacer Fitting Style with 10³/₄" to 14³/₄" arm separation adjustment for 3⁵/₈" x 7¹/₂" side arms. The spacer fitting is tapped for and furnished with (2) 1/2" vertical and (4) 5/8" horizontal assembly washer head bolts.

To order a spacer fitting only, less the assembly bolts, drop the suffix "-B" of the corresponding assembly number.

Ordering Example: 5870-9945 = 587 Series Adjustable Spacer Fitting Style with 8³/₄" to 12³/₄" arm separation adjustment for 3¹/₈" x 9" side arms. The spacer fitting is tapped for 1/2" vertical and 5/8" horizontal assembly washer head bolts. Spacer fitting only; does not include assembly washer head bolts.

Table 1

Arm Separation Adjustment Range

Code	Separation
0	8 ³ / ₄ " to 12 ³ / ₄ "
1	10 ³ / ₄ " to 14 ³ / ₄ "
2	12 ³ / ₄ " to 16 ³ / ₄ "

Table 2

Crossarm Size

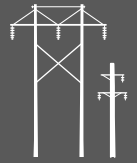
Code	Width "W"	Depth "D"
1	2 ⁵ / ₈ "	5 ⁵ / ₈ "
2	2 ³ / ₄ "	7 ³ / ₈ "
3	3 ⁵ / ₈ "	7 ¹ / ₂ "
4	3 ³ / ₄ "	9 ³ / ₈ "
5	4 ⁵ / ₈ "	9 ¹ / ₂ "
6	5 ¹ / ₈ "	11 ¹ / ₂ "
7	5 ¹ / ₂ "	13 ¹ / ₂ "
8	5 ⁵ / ₈ "	8 ¹ / ₂ "
9	3 ¹ / ₈ "	9"
A	3 ¹ / ₂ "	7 ¹ / ₄ "
B	4 ¹ / ₂ "	6 ³ / ₄ "
C	3 ¹ / ₄ "	7 ⁵ / ₈ "
D	5 ³ / ₄ "	7 ³ / ₄ "
E	6 ³ / ₄ "	8 ³ / ₄ "

Table 3

Mounting Bolt Diameter and Tap Size

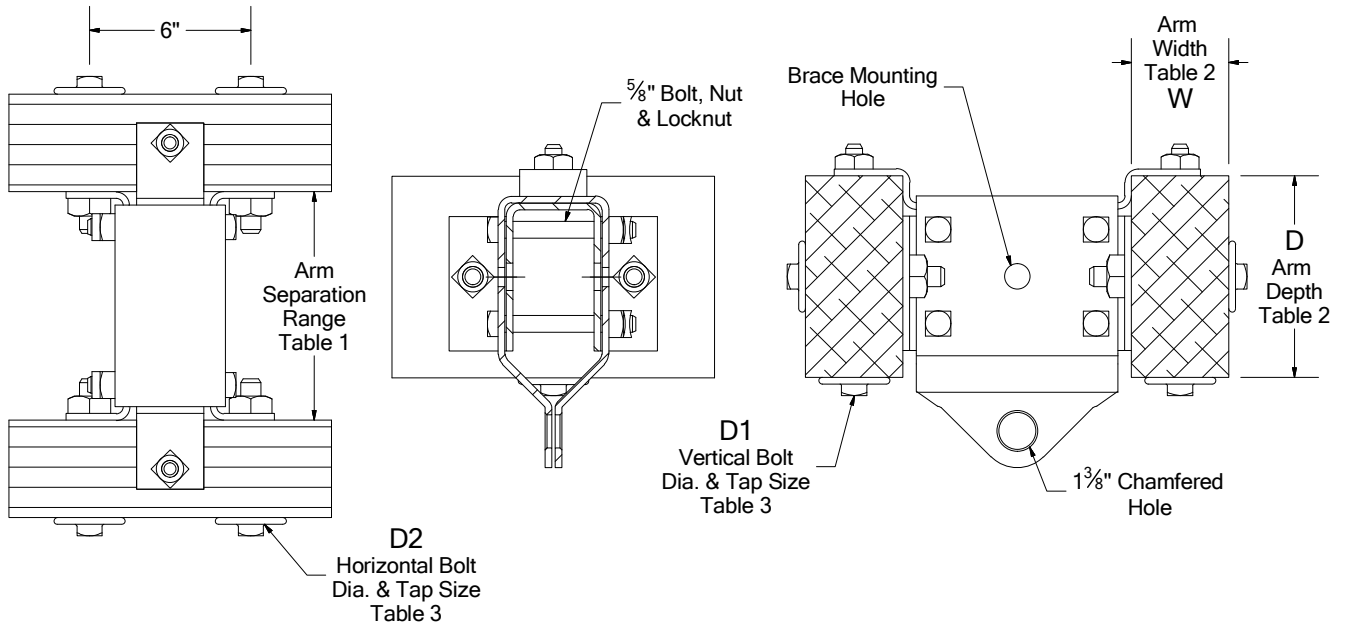
Code	Vertical "D1"	Horizontal "D2"
4	1/2"	1/2"
5	5/8"	5/8"
6	3/4"	3/4"
7	7/8"	7/8"

Note: Spacers are available for additional arm sizes and mounting bolt arrangements upon request.



584 Series Adjustable Spacer Fitting

584 Series Spacer - $\frac{1}{4}$ " Steel, Approx. Wt. 31 Lbs.



586 & 587 Series Adjustable Spacer Fitting

586 Series Spacer - $\frac{1}{4}$ " Steel, Approx. Wt. 32 Lbs.

587 Series Spacer - $\frac{5}{16}$ " Steel, Approx. Wt. 39 Lbs.

